

Smalto a solvente ad effetto micaceo con potere antiruggine

Smalto a solvente ad effetto ferro battuto a base di ossidi di ferro. Garantisce una lunga resistenza nel tempo e un elevato potere anticorrosivo.

Solvent based micaceous enamel paint with antirust properties

Solvent-borne enamel paint based on micaceous iron-oxide pigments for antique wrought iron effect finishes. The product has long-life duration and a high anticorrosive property.

Peinture-laque en phase solvant à effet fer-micacé et pouvoir antirouille

Peinture-laque spécifique pour métaux ferreux, finition à effet fer battu antique. Il garantit une longue durée de vie et un pouvoir anticorrosion élevé.

POTERE ANTIRUGGINE

Smalto a solvente ad effetto micaceo con potere antiruggine

Smalto a solvente ad effetto ferro battuto a base di ossidi di ferro. Garantisce una lunga resistenza nel tempo e un elevato potere anticorrosivo.

Campo di impiego:

- Specifico per ferro (cancellate, ringhiere, inferriate, porte ...).

Preparazione del supporto:

FERRO

- **Ferro nuovo:** Pulire e sgrassare per rimuovere eventuale polvere o sporco. Preparare il supporto con ADIMIN o ANTIRUST.
- **Ferro con vecchie pitturazioni:** Pulire, sgrassare, spazzolare per rimuovere la pittura debole e carteggiare per rimuovere eventuale ruggine. Preparare il supporto con ADIMIN o ANTIRUST.

SUPPORTI DIFFICILI (lamiere zincate, alluminio, pvc...)

- Pulire e sgrassare per rimuovere eventuale polvere o sporco. Preparare il supporto con FUNDFLEX.

ANTIRUST POWER

Solvent based micaceous enamel paint with antirust properties

Solvent-borne enamel paint based on micaceous iron-oxide pigments for antique wrought iron effect finishes. The product has long-life duration and a high anticorrosive property.

Intended use:

- Specific for iron (gates, fencing, railings, doors ...).

Surface preparation:

IRON

- **New iron:** Clean and degrease the surface to remove all possible traces of dust or dirt. Treat the with a priming coat of ADIMIN or ANTIRUST.
- **Iron with old paint:** Clean, degrease and brush the surface to remove any loose or weak paint then sand away any existing rust. Treat the with a priming coat of ADIMIN or ANTIRUST.

DIFFICULT SUBSTRATES (galvanized metals, aluminum, PVC...)

- Clean and degrease the surface to remove all possible traces of dust or dirt. Prime the support with FUNDFLEX.

POUVOIR ANTIROUILLE

Peinture-laque en phase solvant à effet fer-micacé et pouvoir antirouille

Peinture-laque spécifique pour métaux ferreux, finition à effet fer battu antique. Il garantit une longue durée de vie et un pouvoir anticorrosion élevé.

Utilisation:

- Spécifique pour fer (portails, clôtures, garde-corps, portes ...).

Préparation du support:

Pour la France: se conformes au DTU 59.1.

FER

- **Fer neuf:** Nettoyer et dégraisser et enlever toutes traces de poussière ou de saleté. Traiter le support avec ADIMIN ou ANTIRUST.
- **Fer déjà revêtus avec une vieille peinture:** Nettoyer, dégraisser, brosser pour enlever la peinture faible et poncer pour enlever toute rouille possible. Traiter le support avec ADIMIN ou ANTIRUST.

SUPPORTS DIFFICILES (tôle galvanisée, aluminium, PVC...)

- Nettoyer et dégraisser la surface des traces de poussière ou de saleté. Traiter le support avec FUNDFLEX.



Per interni ed esterni
For interiors and exteriors
Pour intérieur et exérieures



Diluizione:
Acqua ragia minerale
Pennello: 2-3% | Rullo: 2-3%
Thinning:
White spirits
Brush: 2-3% | Roller: 2-3%
Dilution:
White spirit
Pinceau: 2-3% | Rouleau: 2-3%



Resa per mano
Yield per coat
Rendement par couche

8-10
m² / l



Essiccazione
Al tatto: 4-6 ore
Completa: 24 ore
Sovrapplicazione: 12 ore
Drying time
Touch dry: 4-6 hours
Totally dry: 24 hours
Recoat time: 12 hours
Séchage
Au toucher: 4-6 heures
Comple: 24 heures
Recouvrement: 12 heures



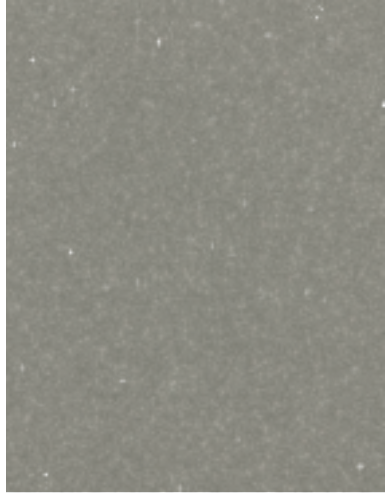
Adicolor s.r.l.
20076 Triginto di Mediglia (MI) - ITALY
Strada Provinciale 159, n. 2
Tel. +39 02 90 660 740 r.a.
www.adicolor.it - info@adicolor.it



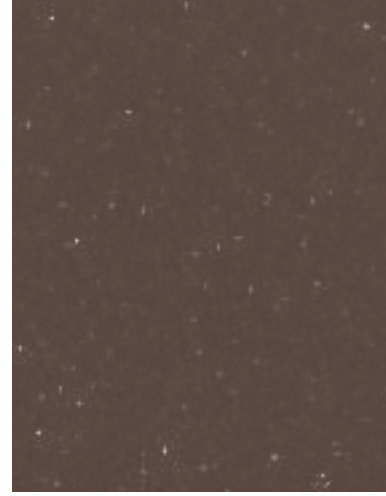
Azienda con sistema di qualità
certificata ISO 9001:2015 da
Bureau Veritas Italia



COLORI DI CARTELLA
CATALOGUE COLORS
COULEURS DE CATALOGUE

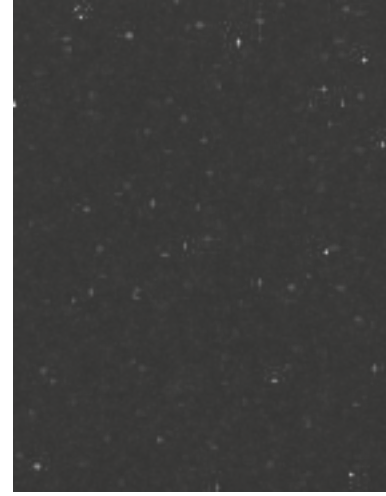


FM01



FM02

Ironflex 

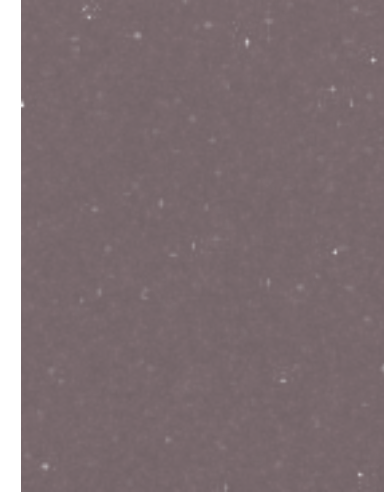


FM03

COLORI A TINTOMETRO
COLORS IN TINTING SYSTEM
COULEURS DANS LE SYSTÈME À TEINTER

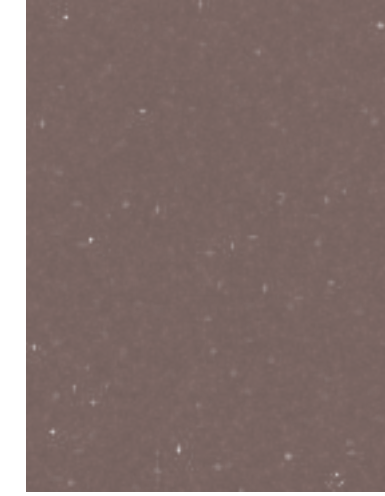


FM10

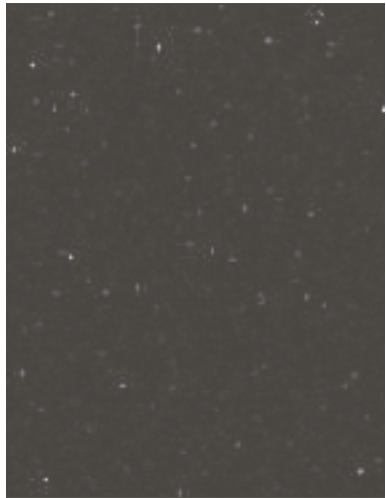


FM11

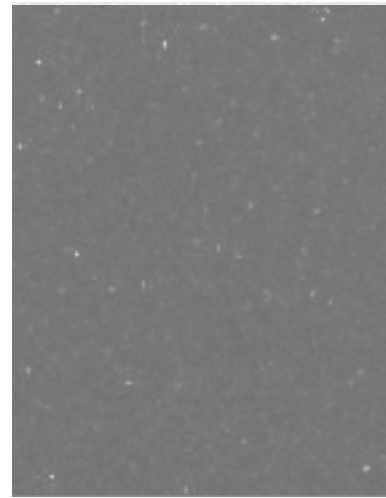
Ironflex 



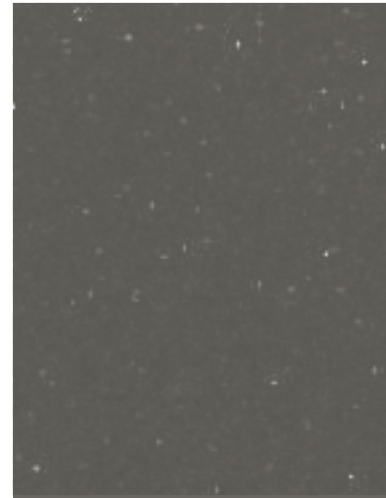
FM12



FM04



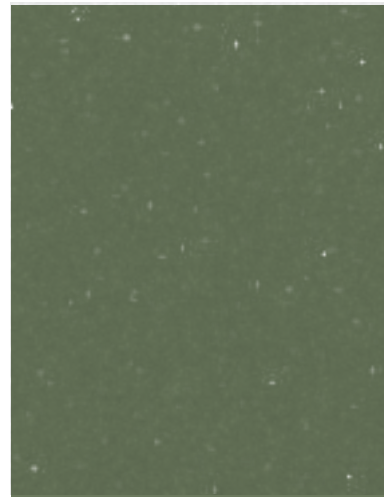
FM05



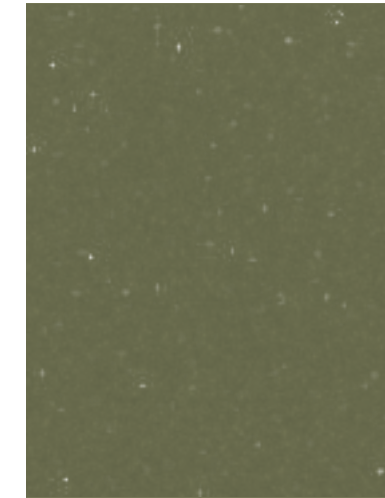
FM06



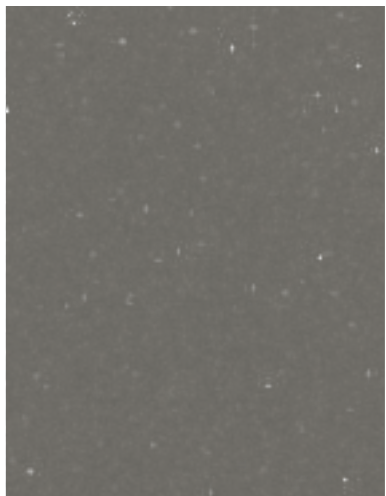
FM13



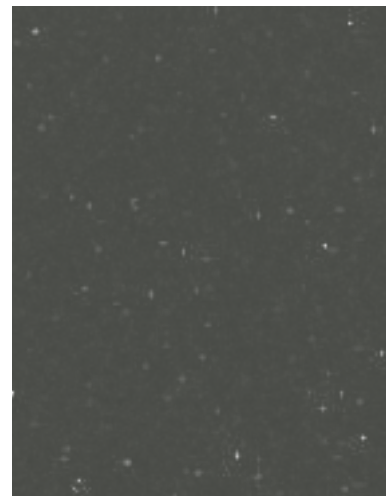
FM14



FM15



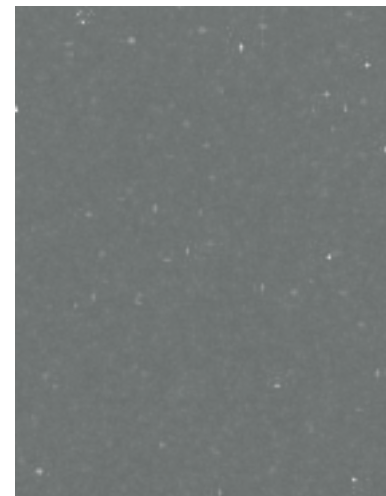
FM07



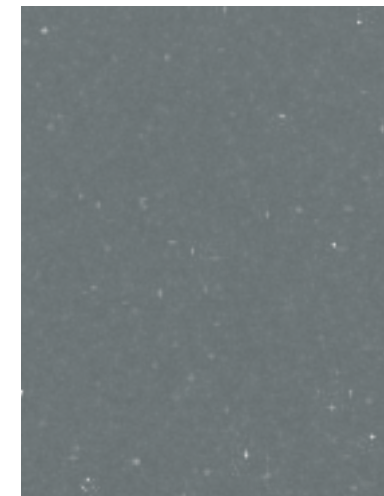
FM08



FM09



FM16



FM17



FM18



Potere antiruggine

Antirust power

Pouvoir antirouille